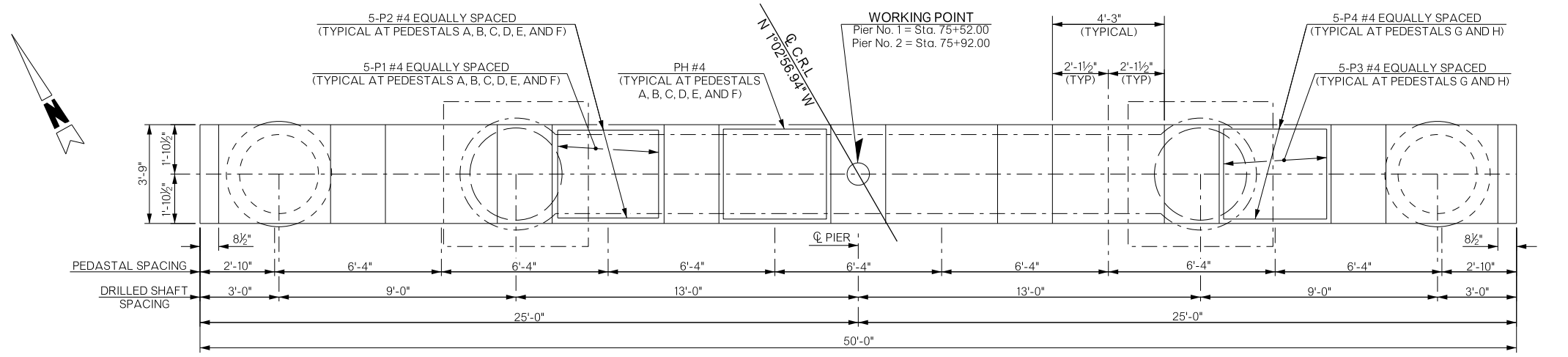
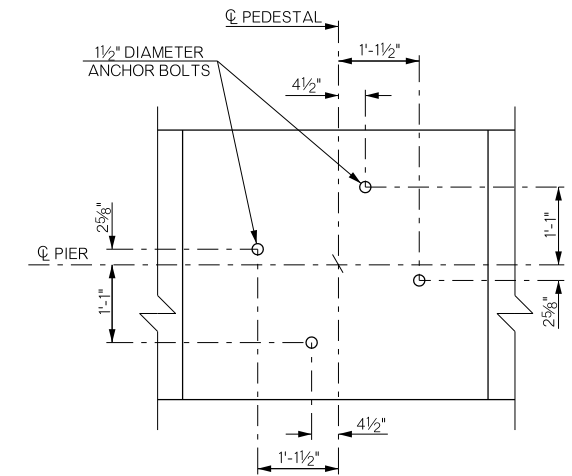


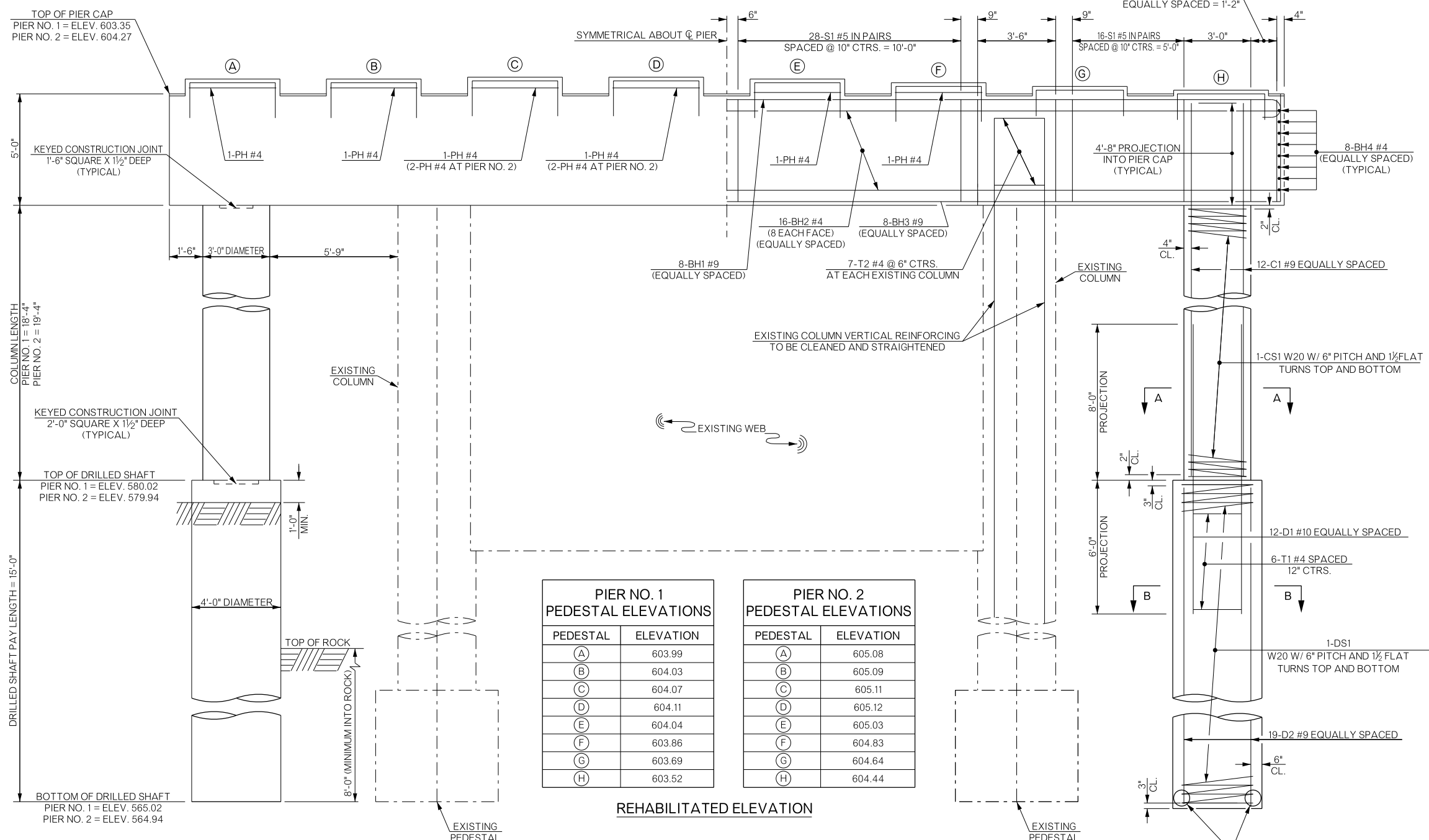
REVISIONS		
REV. NO.	DESCRIPTION	DATE



REHABILITATED PLAN



ANCHOR BOLT LAYOUT
(TYPICAL EACH PEDESTAL)



PIER NO. 1 PEDESTAL ELEVATIONS

PEDESTAL	ELEVATION
(A)	603.99
(B)	604.03
(C)	604.07
(D)	604.11
(E)	604.04
(F)	603.86
(G)	603.69
(H)	603.52

PIER NO. 2 PEDESTAL ELEVATIONS

PEDESTAL	ELEVATION
(A)	605.08
(B)	605.09
(C)	605.11
(D)	605.12
(E)	605.03
(F)	604.83
(G)	604.64
(H)	604.44

REHABILITATED ELEVATION

PIER NO. 1 BAR LIST

MARK	NO.	SIZE	FORM	LENGTH
EPOXY COATED				
BH1	8	#9	BNT.	52'-2"
BH2	16	#4	STR.	49'-8"
BH3	8	#9	STR.	49'-8"
BH4	16	#4	BNT.	5'-4"
BV1	6	#4	BNT.	6'-6"
C1	24	#9	BNT.	22'-10"
P1	30	#4	BNT.	6'-10"
P2	30	#4	BNT.	7'-4"
P3	10	#4	BNT.	5'-11"
P4	10	#4	BNT.	6'-5"
PH	6	#4	BNT.	14'-5"
S1	100	#5	BNT.	14'-7"
T2	14	#4	BNT.	10'-6"
NON-EPOXY COATED				
CS1	2	W20	SPIRAL	286'-5"
① TWO DRILLED SHAFTS				
NON-EPOXY COATED				
D1	24	#10	STR.	14'-0"
D2	38	#9	STR.	14'-7"
DS1	2	W20	SPIRAL	303'-6"
T1	12	#4	BNT.	10'-4"

① INCLUDED IN PRICE BID PER LINEAR FOOT OF DRILLED SHAFT.

PIER NO. 2 BAR LIST

MARK	NO.	SIZE	FORM	LENGTH
EPOXY COATED				
BH1	8	#9	BNT.	52'-2"
BH2	16	#4	STR.	49'-8"
BH3	8	#9	STR.	49'-8"
BH4	16	#4	BNT.	5'-4"
BV1	6	#4	BNT.	6'-6"
C1	24	#9	BNT.	23'-10"
P1	30	#4	BNT.	6'-10"
P2	30	#4	BNT.	7'-4"
P3	10	#4	BNT.	5'-11"
P4	10	#4	BNT.	6'-5"
PH	8	#4	BNT.	14'-5"
S1	100	#5	BNT.	14'-7"
T2	14	#4	BNT.	10'-6"
NON-EPOXY COATED				
CS1	2	W20	SPIRAL	301'-2"
① TWO DRILLED SHAFTS				
NON-EPOXY COATED				
D1	24	#10	STR.	14'-0"
D2	38	#9	STR.	14'-7"
DS1	2	W20	SPIRAL	303'-6"
T1	12	#4	BNT.	10'-4"

PIER QUANTITIES

ITEM	UNIT	PIER NO. 1 TOTAL	PIER NO. 2 TOTAL
CLASS A CONCRETE	C.Y.	47.00	47.90
REINFORCING STEEL	LB.	200.00	210.00
EPOXY COATED REINFORCING STEEL	LB.	7,300.00	7,380.00
WATER REPELLENT (VISUALLY INSPECTED)	S.Y.	89.00	90.00
DRILLED SHAFTS 48" DIAMETER	L.F.	30.00	30.00

BRIDGE "A" SH-78 OVER CHUCKWA CREEK BRYAN COUNTY

PIER DETAILS (SHEET 2 OF 3)

STATE OF OKLAHOMA DEPARTMENT OF TRANSPORTATION

DESIGN: CJO 6/15
 DETAIL: DPG 8/15
 CHECK: TEE 9/15
 SQUAD: HENSLEY
 ENGR: DEFRANCO

JOB/PIECE NO. 27912(04) SHEET NO. B016